

PLANT FITTING GUIDE

Fitting time approx. 45 mins



Installation Steps

- 1 Preparation
- 2 Location
- 3 Fitting
- 4 Activation

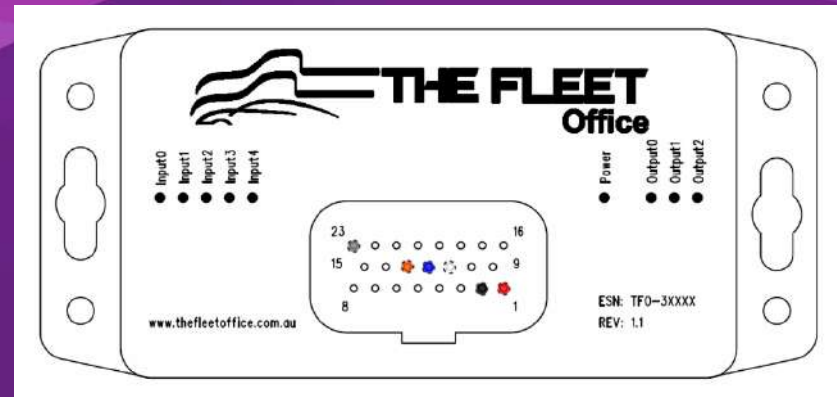
Tools required (dependent on fit)

- Crimping tool and small selection of fittings
- Wire stripping tool
- Electrical tape
- Solder and soldering iron
- Tech screws and drill
- Stanley/craft knife
- Cables/split conduit

Step 1 – Preparation

- For PLANT installations the Plant Tracker is fitted in an IP67 waterproof box. The 2620 is supplied with a waterproof connector and harness.
- The cables/wires which require connection are
 - **Black Wire = Connected to battery negative.**
 - **Red Wire = Connected to battery positive.**
 - **Grey wire = Connected to chassis ground (machine side of isolator).**
 - **White wire = Connected to alternator signal wire (indicates engine is running).**
 - It is recommended that a free hanging fuse is connected on the Battery positive cable.
 - If extra inputs are required please contact The Fleet Office.

Pin	Description	Wire Colour
1	12V-24V (Power)	Red
2	Ground	Black
11	Ignition	White
12	Input 1	Blue
13	Input 2	Orange
23	Chassy Ground	Grey



Step 2 – Location

- Identify the output from the alternator. Check that the feed is only live when the ignition is on AND engine is running.
- Isolate the machine.
- The box should be located away from ignition sources or areas where it can become damaged.
- It should have no metal obstruction between the top of the box and the sky for best results.

Examples of locations to mount tracker

A = Fitted on enclosed generator IP55 waterproof box

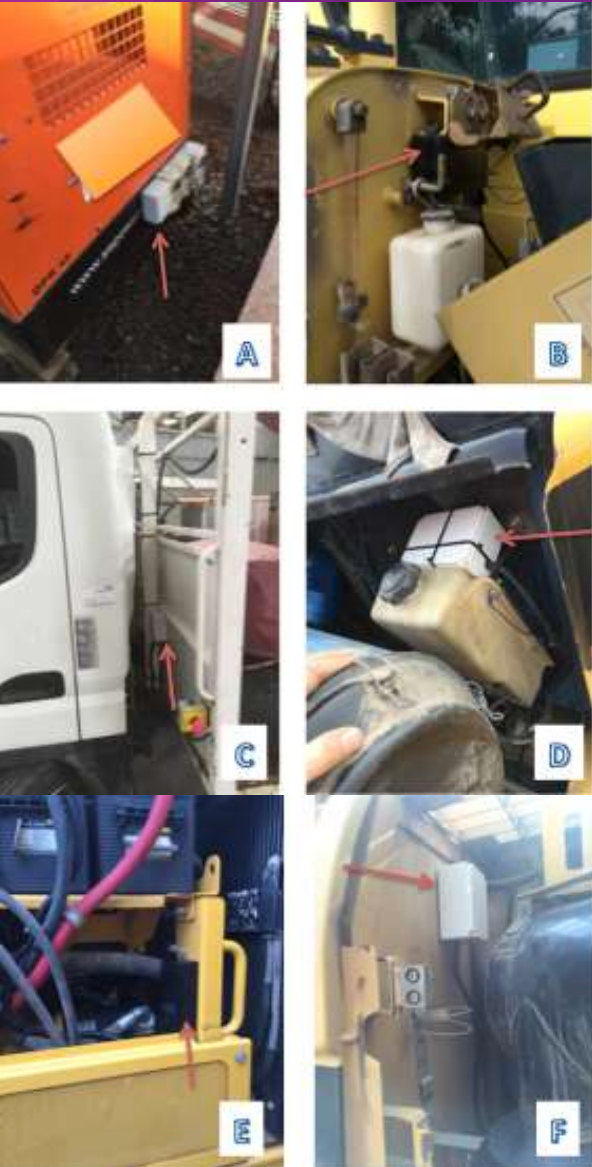
B = Fitted on 5 t excavator in cooler intake area.

C = Fitted on Dozer internally.

D = Fitted under bonnet on CAT 740 Dump Truck.

E = Fitted under vents on Grader.

F = Fitted below grates on CAT 20T Excavator.



Step 3 – Fitting

- **Run the cables**
 - Ensure the machine is isolated.
 - Twin wire (Black and Red) goes directly to battery, you must fit an in-line 5A fuse to the positive cable. Leave the fuse out at this point.
 - Run the White wire to the identified alternator signal output (note this may require a join at the wire).
 - Connect the Grey single wire to the chassis earth. Ensure cables are tidy and protected with conduit where required.
 - Leave the box unplugged at this point.
- **Test the device**
 - Un-isolate the machine.
 - Fit the 5A fuse, and start the machine. Check the voltage at the plug of the harness. Red and white should both show around 12V-24V.
 - If voltage is correct. Stop the machine and plug in the box to the harness
 - Wait 3-5 minutes and re-start the machine. (The device will be registering on the network and obtaining GPS fix)
 - On the device, the power light should be lit and if the engine is running, input 0 should also be lit.
- **Pack away**
 - Ensure all cables and ties are tidy.
 - Take photo of the Asset ID sticker and then of the device location and send via email to admin@thefleetoffice.com.au

Step 4 – Activation

- Call 1300 110 248. You will need to provide the following:
 - Machine ID (if not known, some identifying data such as Registration)
 - Current Hours/KM reading
 - Tracker number being fitted
 - The help line will run some tests with you, so please be in the cab at this point.